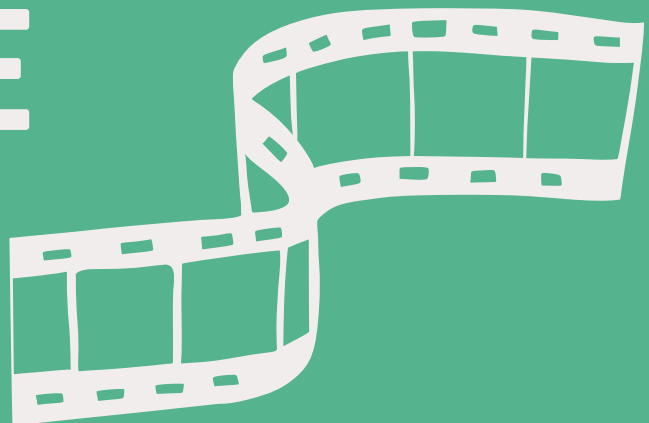


**CINEMA**  
**FOR ALL**

**SHEFFIELD KIT**  
**SCREENING**  
**GUIDE**



# Contents

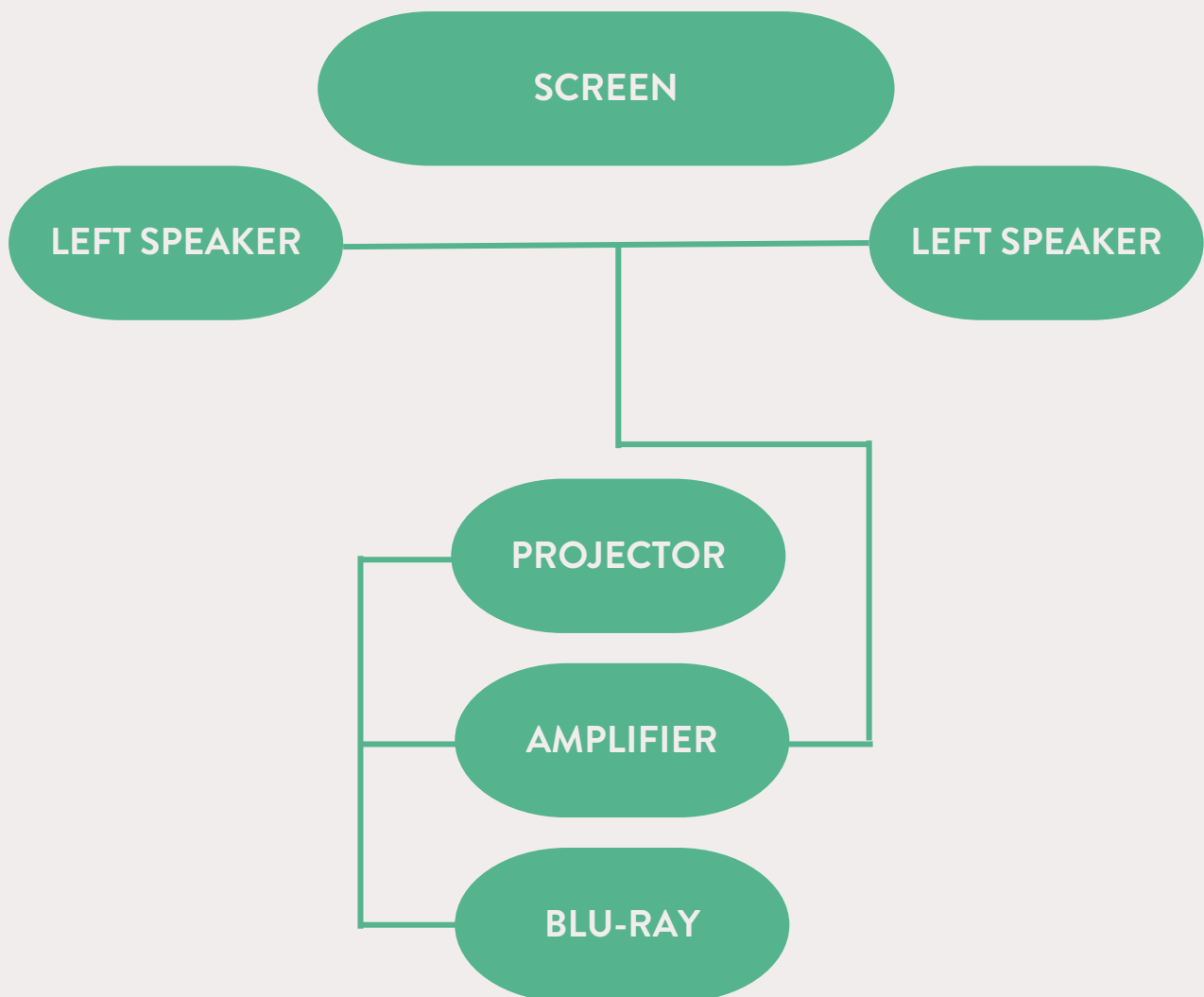
Set up .....	1
Screens .....	2
Speakers and Amplifiers .....	4
Projectors .....	5
Blu-Ray Players .....	5
Screening Checklist .....	6

Thank you for hiring Cinema For All's Sheffield equipment! Here you'll find some handy tips and links to make sure your event all goes to plan. We always recommend practicing with the kit ahead of the big day. Best of luck with your screening!

### The kit includes:

- Celexon Folding Screen 305 x 110cm
- Canon LX-MW500 Projector
- Samsung BD-J4500R Blu-Ray player
- Yamaha Stagepas 400i Amplifier and Speakers

### Set Up Diagram:



## Screen

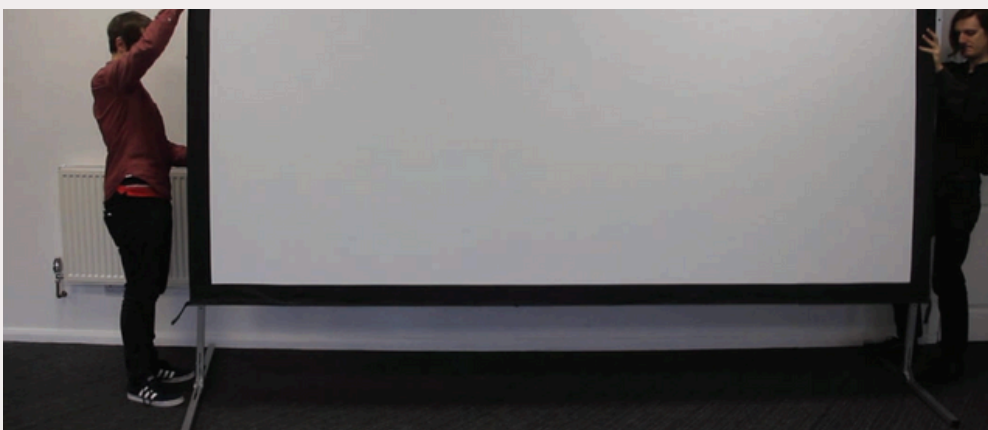
1. Working in pairs, lay the main frame out on the floor and pull it out into a full rectangle and lock the frame by clipping the corner brackets into place.



2. Lay the fabric over the frame. Begin clipping into place using the poppers around the frame, starting in the corners and work your way into the middle of the frame.



3. Take the left and right legs and place them to the side of the screen. Agree a set height with your partner and raise the screen at the same time.



4. Screw the locknuts from the accessory bag through the frame and into the screen. At the screens maximum height, you can only add four bolts. If it is lower you can fix it with all six bolts.



## Top Tips

- The screen material will be harder to stretch when cold, try taking it out and leaving it in a warm room before setting up.
- When folding the screen material to pack away make sure that the screen is folded with the back of the screen on the outside, which helps to avoid staining and damage to the display.

## Speakers and Amplifier

Read the Yamaha Stagepas Amplifier and Speakers manual [here](#).



Need a hand setting up? See the set up guide [here](#) for more information.

## Projectors

Read the Canon LX-MU500 Projector manual [here](#).



### Top Tips

- Check that the projector is on the right HDMI input settings.
- Using the controls and the key stoning features make sure the picture is in line with the screen.
- Using the USB port on the projector you can put your logo or any other promotional material on the screen before the beginning of the screening.

## Blu-Ray Player

Read the Samsung BD-J4500R Blu-Ray player manual [here](#).



### Top Tips

- Skip through several scenes in the film to check that the Blu-Ray player is working and providing a clear picture throughout.
- If the disc is skipping or jumping, use a soft, damp cloth, to wipe away any dirt. Start from the centre of the disc and go to the outside. Make sure not to wipe in circles as this will spread dirt rather than get rid of it! Once you've done this, repeat with the dry part of the cloth.
- Make sure to have a spare set of batteries to hand should the remote need them during your screening.

## Checklist

- Make sure you have been given all of the kit listed in the equipment specifications.
- Be sure to follow the listed manuals and diagrams when setting up.
- Check the DVD/Blu-Ray for any visible scratches.
- Once the equipment is set up, play the film to test all equipment and lighting levels.
- Check the projector focus using the remote, the best way to do this is to skip to the first scene in the film with some text and alter the focus based on that.
- Check the sound at several different key moments throughout the film to make sure that no type of sound is getting lost.
- Tape down all loose cables and wires to prevent any tripping hazards.

For any further support, call the Cinema For All office at any time between 9:00-5:00, Tuesday to Thursday, or email [info@cinemaforall.org.uk](mailto:info@cinemaforall.org.uk) between 9:00-5:00 Monday to Friday and we will aim to respond as soon as possible.